

# Water Quality Conditions in the Norwalk River

Harbor Watch/River Watch  
Program



Earthplace

*The Nature Discovery Center*

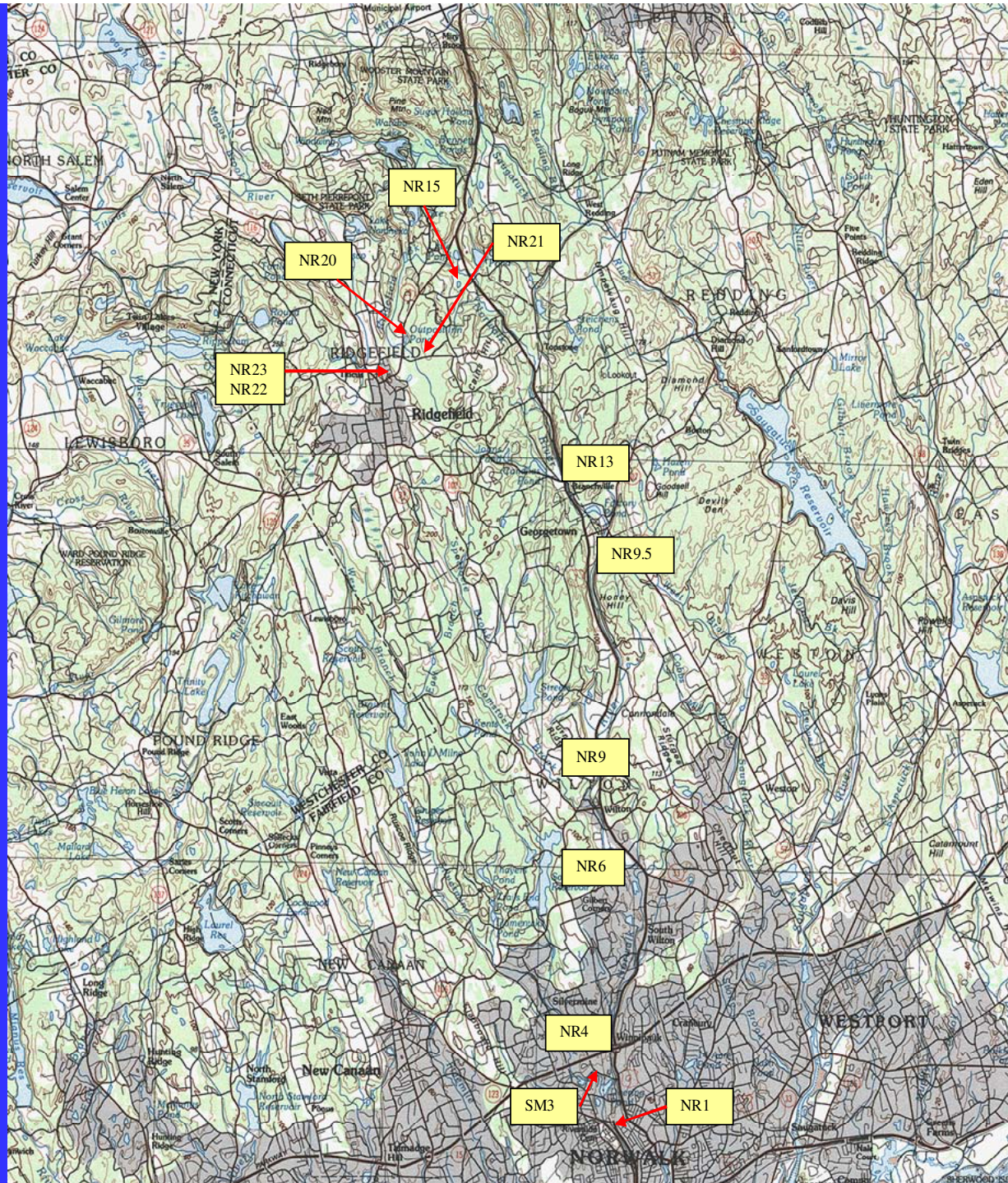
# Norwalk River Watershed

## Areas of Study

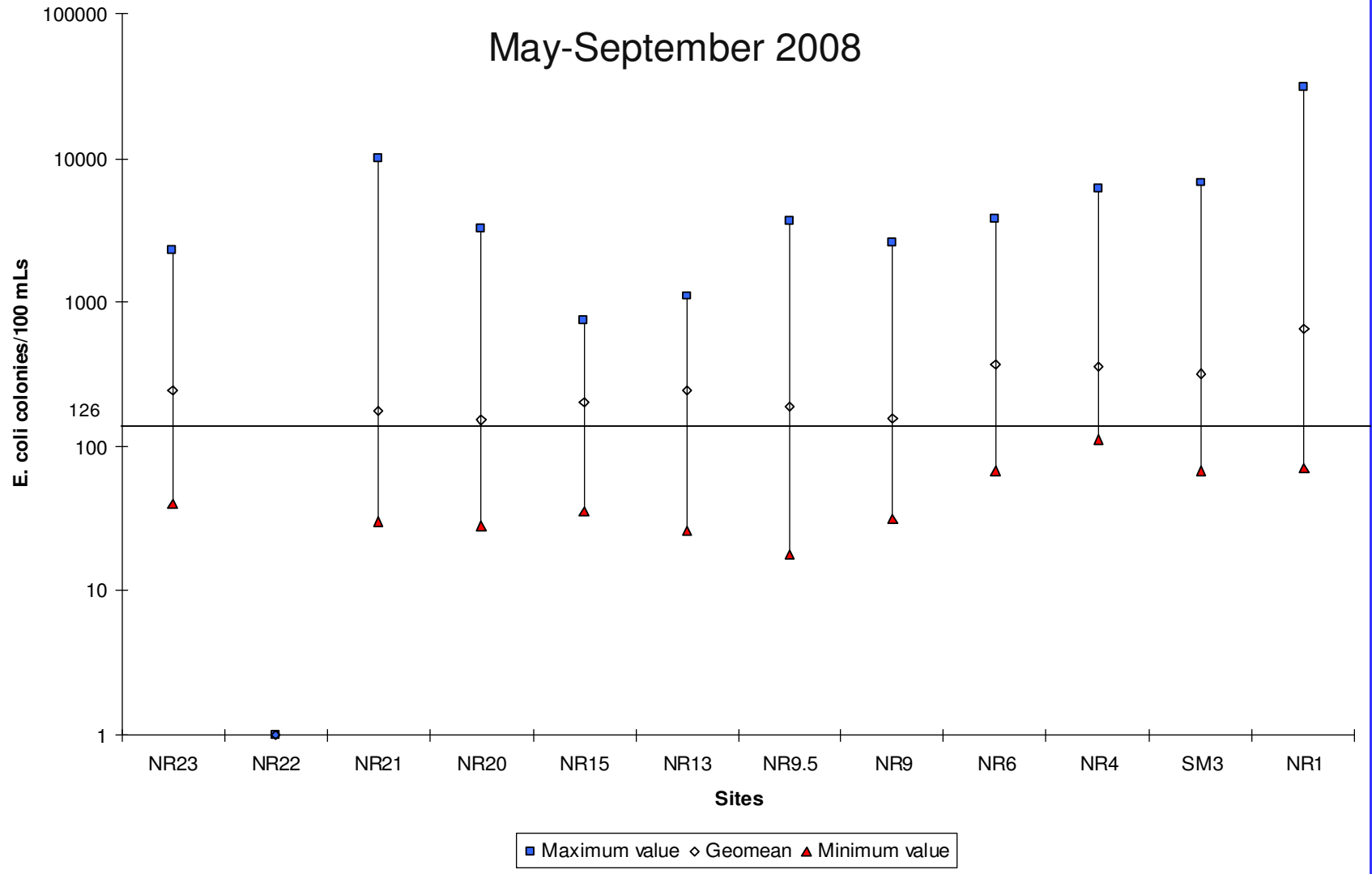
- Main River
- Georgetown/Branchville Area
- Steep Brook
- Bennett's Brook
- Comstock Brook
- Cooper Brook
- Silvermine River
- Norwalk Estuary

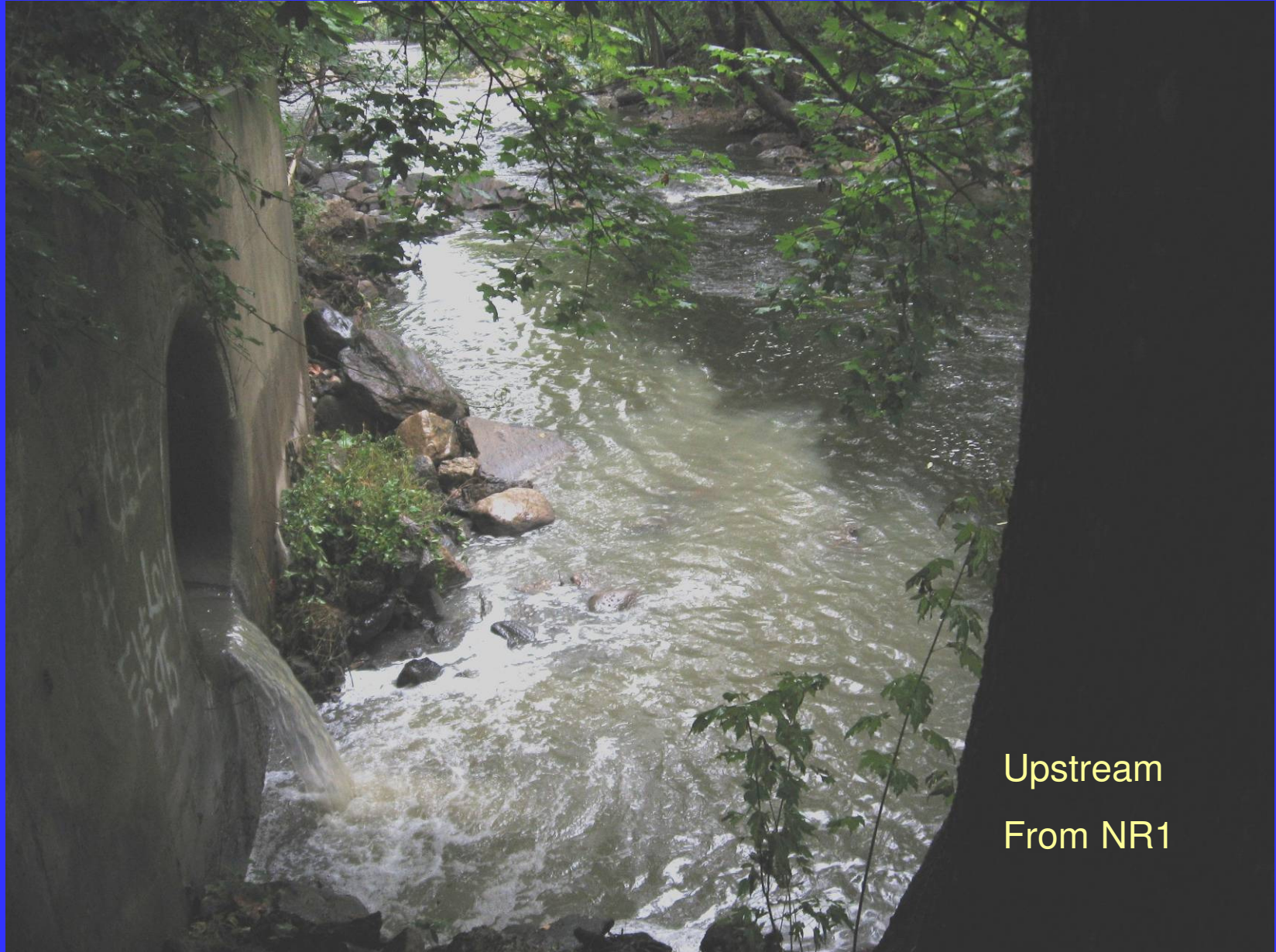
## Supporting Partners

- Norwalk River Watershed Association (NWRA)
- Norwalk Mayor's Water Quality Committee
- Wilton Conservation Dept.
- Fairfield County Community Foundation
- Jeniam Foundation
- Trout Unlimited
- King Industries
- Town of Ridgefield
- CT Agriculture Dept.
- Norm Bloom & Son Oysters
- Hillard Bloom Shellfish, Inc.



# May-September 2008

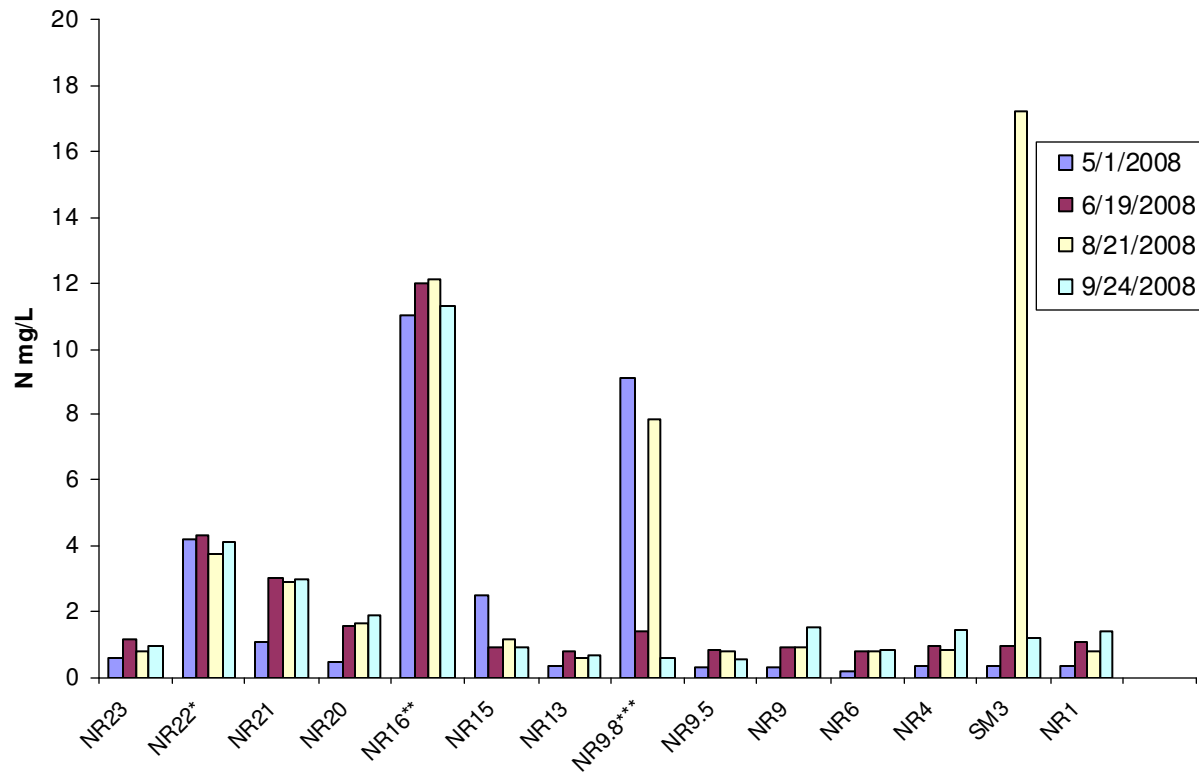




Upstream  
From NR1

Table showing geometric E. coli means and % frequency over 410 colonies/ 100 mL October 2008-April 2009

Sites	<b>Geomean</b>	%frequency over 410 colonies/100mLs
NR23	<b>58</b>	14.29%
NR22	<b>78</b>	50.00%
NR21	<b>245</b>	42.86%
NR20	<b>204</b>	0.00%
NR15	<b>59</b>	0.00%
NR13	<b>30</b>	0.00%
NR9.5	<b>18</b>	0.00%
NR9	<b>16</b>	0.00%
NR6	<b>39</b>	0.00%
NR4	<b>81</b>	0.00%
SM3	<b>60</b>	0.00%
NR1	<b>70</b>	0.00%



\* sew age treatment discharge at Ridgefield (700 mgd)  
 \*\* sew age treatment discharge at Ridgefield Route 7 plant (80 mgd)  
 \*\*\* sew age treatment discharge at Georgetown (45 mgd)

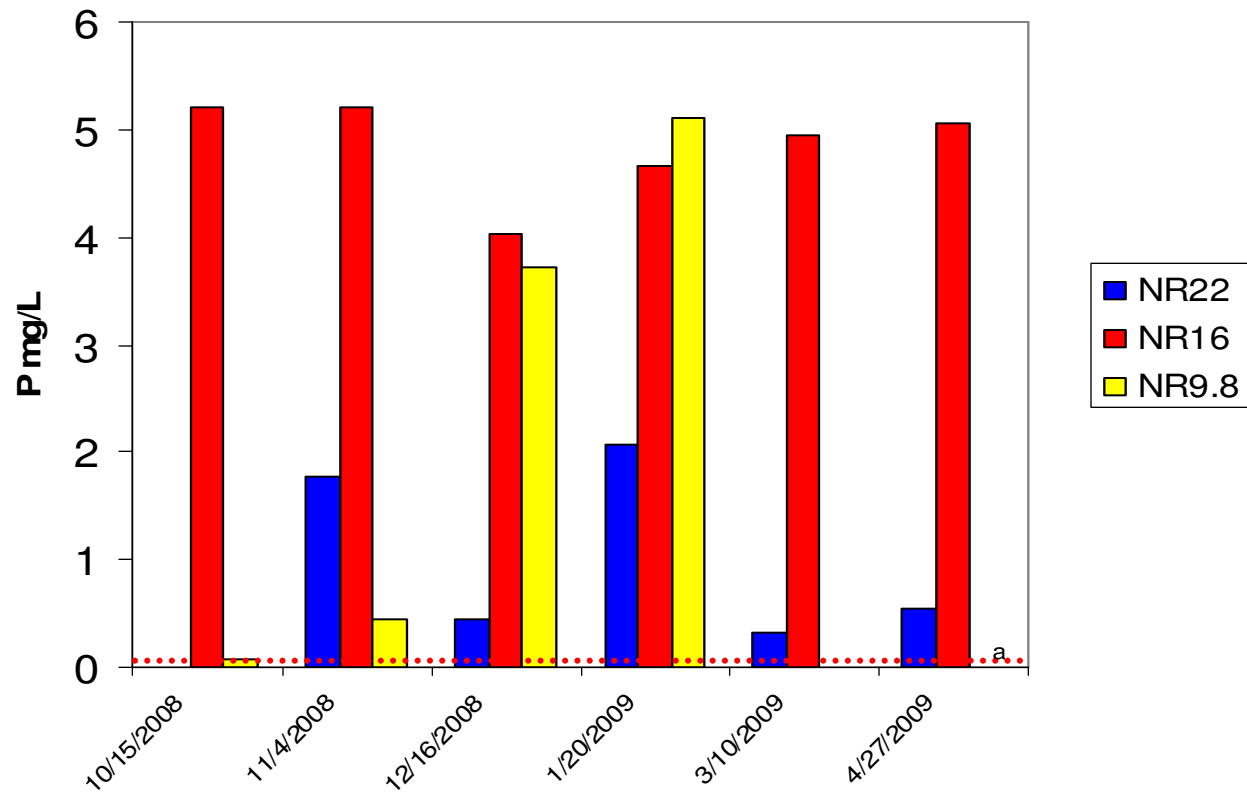
Table 4 Observed Total phosphorous (TP) values, mg/L at three WTP effluent discharges and two sampling sites on 5/1, 6/19, 8/21, and 9/24/2008

WTP	Site Number	TP mg/L on 5/1	TP mg/L on 6/19	TP mg/L on 8/21	TP mg/L on 9/24
Ridgefield	NR22	ND*	ND*	ND*	ND*
Route 7	NR16	5.40	5.15	5.07	4.57
	NR15	ND*	ND*	0.13	ND*
Georgetown	NR9.8	5.20	ND*	ND*	ND*
	NR1	ND*	ND*	ND*	0.32

\* Non-detectable, minimum **detection** level is .05 mg/L at York laboratories, Inc.



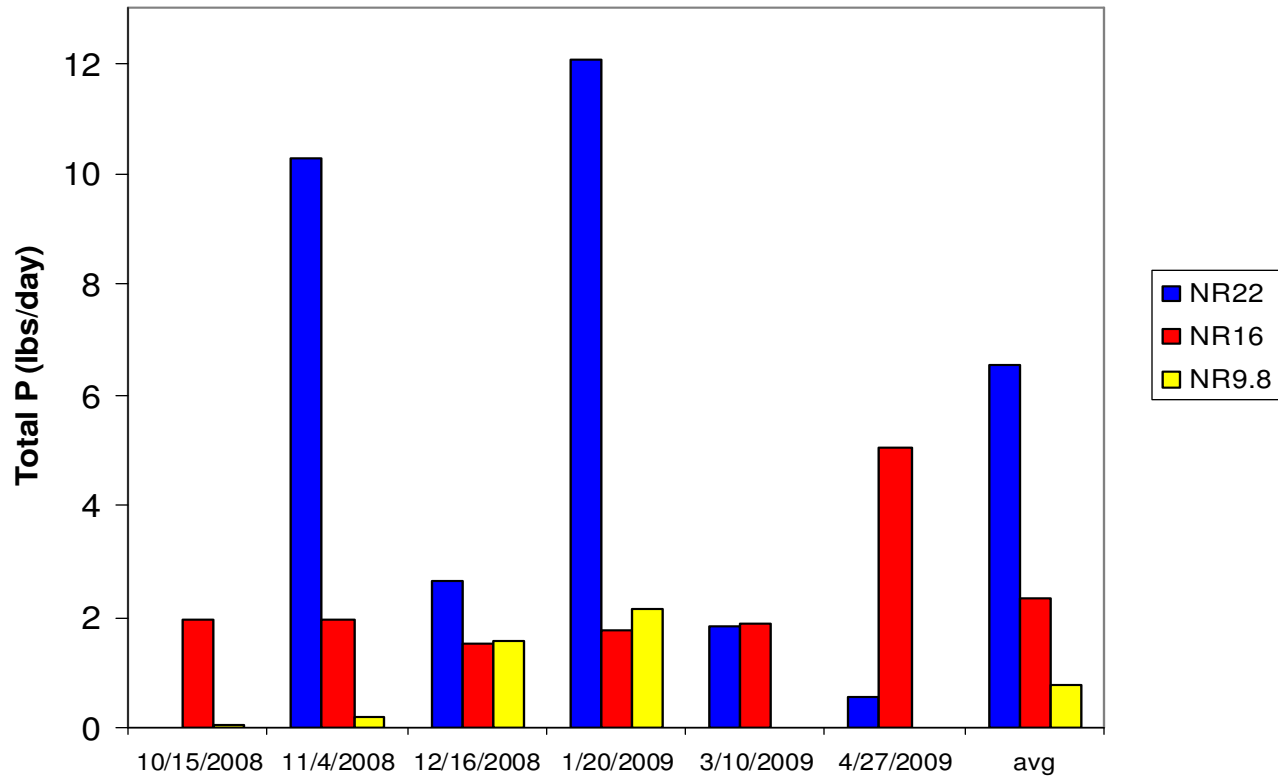
### STP Phosphorus



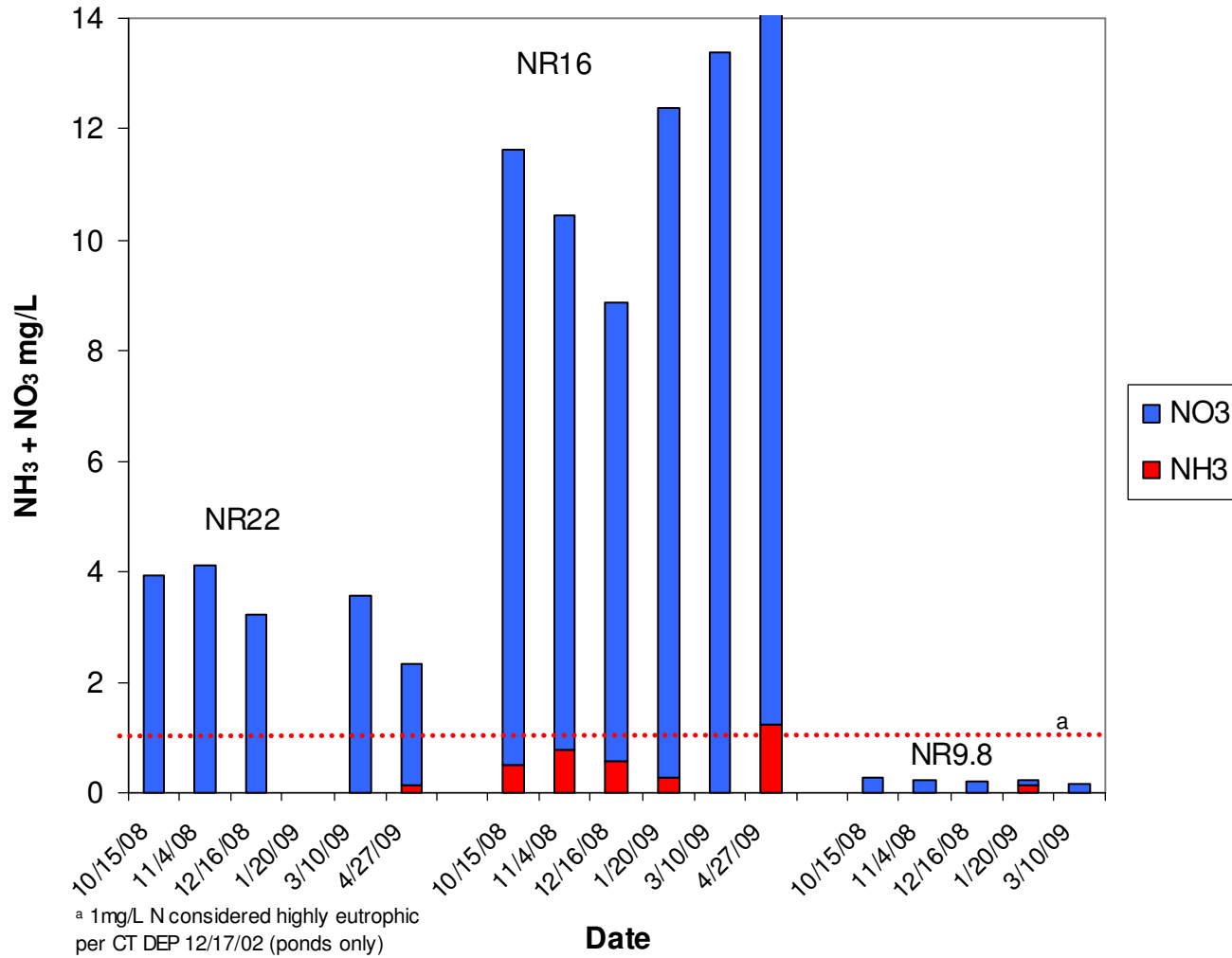
<sup>a</sup> 0.05 mg/L P considered highly eutrophic per CT DEP 12/17/02 (ponds only)

**Sampling Dates**

### P Loading



### STP Nitrogen



### N loading

